



AVD-1
with Caster
Mounting Plates



AVD-3
with Optional
Casters



AVD-2
with Optional
Casters and
Pull Handle

AVD

PORTABLE CABLE STORAGE REELS WITH SLOTTED DIVIDER DISCS

Similar in construction to the Series AV reels, the primary advantage of a Series AVD reel is the addition of a slotted divider disc within the reel spool. This divider disc provides a convenient way for the user to have unobstructed access to both cable connector ends. With this feature, it is easy to pull off any length of cable and still have access to both connectors. There is no need to pull the entire length of cable off the reel before using it.

- Communication, broadcast, and pro-audio applications.
- Rugged steel frame and aluminum spool construction.
- Black, non-reflective matte finish.
- Slotted divider disc provides 2" wide space for storage of short cable.
- Frame clips allow stacking of reels.
- Adjustable Cam-lock drag brake locks cable in place.
- Optional heavy-duty, locking caster wheels available.
- Pull handle available for AVD-2 and AVD-3 pn9949.0500.
- AVD-3 only — side mounted punchable connector panels are standard.

Parts Drawing – AVD-1 - ISO 222, AVD-2 - ISO 223, AVD-3 - ISO 224

Model Number	Cable Capacity of Reel feet m.									Approx. Weight without cable lb. kg.		Reel Dimensions inches mm.									
	O.D. (in) O.D. (mm)	.25 6	.32 8	.38 10	.41 10	.45 11	.49 12	.58 15	.67 17	NET Wt.	UPS/ FedEx SHIP Wt.	Freight SHIP Wt.	A	B	B1	C	D	E	F	G	H
AVD-1		500 127	325 83	200 51	175 44	125 32	100 25	—	—	15 4	58* 15	22 6	10.25 260	6 152	2 51	6 152	13.75 349	11.75 298	13.25 337	14.25 362	7 178
AVD-2		—	—	—	600 152	500 127	425 108	250 64	200 51	26 7	80* 20	31 8	13.13 334	7.5 191	2 51	8 203	20 508	18 457	13.25 337	20.5 521	10 254
AVD-3		—	700 178	500 127	400 102	350 89	300 76	175 44	—	17 4	58* 15	23 6	12.82 326	7 178	2 51	6 152	16 406	15 381	13.5 343	16.88 429	7.88 200

Notes:

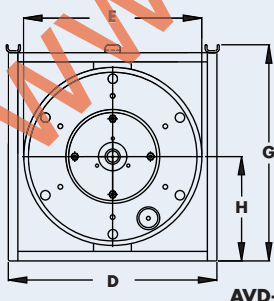
Specifications subject to change.

1. Be sure to check dimensions and weights prior to ordering.

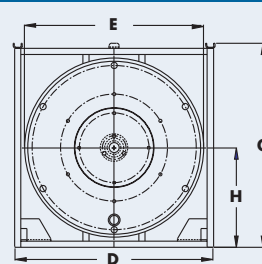
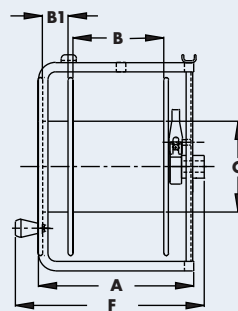
2. Casters will add 2 3/4" to G dimension on AVD-1 and AVD-3.

Casters will add 3 1/2" to G dimension on AVD-2.

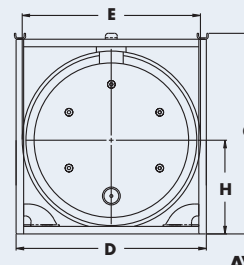
*Dimensional weight applies when shipped as a parcel package (via FedEx or UPS Ground)



AVD-1



AVD-2



AVD-3

