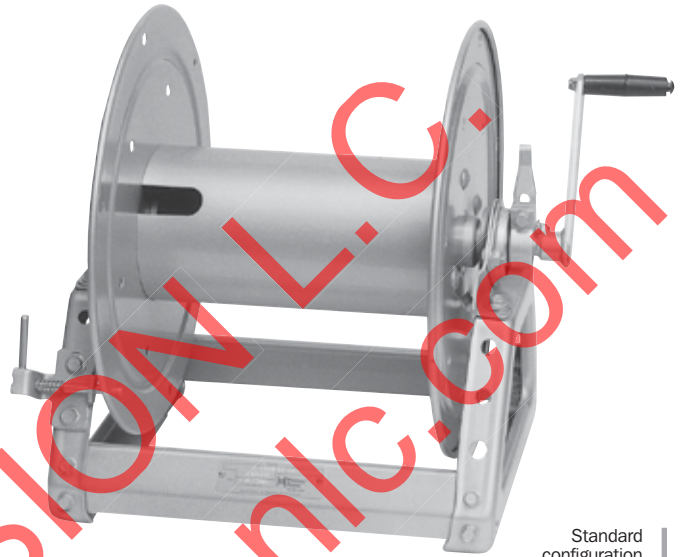


Series C1500

• Hose • Rope • Cable • Wire

To handle single 1/4" through 1" O.D.

- Reels are designed for storage of long lengths of hose, cable, rope, wire or other materials.
- A 1-1/8" x 2-3/8" (28 mm x 60 mm) opening in the drum to initiate winding.
- Direct crank rewind, permanently attached. Removable crank option is available. Also available is a chain and sprocket rewind powered by electric, compressed air or hydraulic motor.
- Supplied with cam-lock brake on manual rewind models only.
- Optional divider discs can be placed at almost any point. Be sure to specify spacing of discs on your order.
- Rollers may be purchased as accessory items.



Standard configuration shown



Optional External Mounting Brackets

Part No. 9906.0027.
Add 2-1/2" to the X dimensions shown in the chart.

PARTS DRAWING – ISO 218

Model Number <small>For power rewind see Note 5</small>	Hose Capacity of Reel <small>feet m</small>					Approx. Weight Crank Rewind <small>lb. kg</small> <small>see Note 4</small>			Reel Dimensions*** <small>in. mm</small>						
	O.D. in. <small>mm</small>	1/4 6	1/2 13	3/4 19	1 25	NET	UPS/ FedEx SHIP Wt.	Freight SHIP Wt.	A	B	E CRANK	E POWER	F CRANK	F POWER	X
C1514-17-18	1300	325	150	75	23	23	65*	58	11	6	16.5	19	17.5	16.5	9.5
	396	99	46	23	10	10	30	26	279	152	419	483	445	491	241
C1520-17-18	-	650	300	150	25	25	80*	60	17	12	16.5	19	23.5	22.5	15.5
	-	198	91	46	11	11	36	27	432	305	419	483	597	572	394
C1526-17-18	-	900	450	225	27	27	98*	62	23	18	16.5	19	29.5	28.5	21.5
	-	274	137	69	12	12	45	28	584	457	419	483	749	724	546
C1530-17-18	-	1000	550	275	29	29	110*	64	27	22	16.5	19	33.5	32.5	25.5
	-	305	168	84	13	13	50	29	686	559	419	483	851	826	648

Notes:

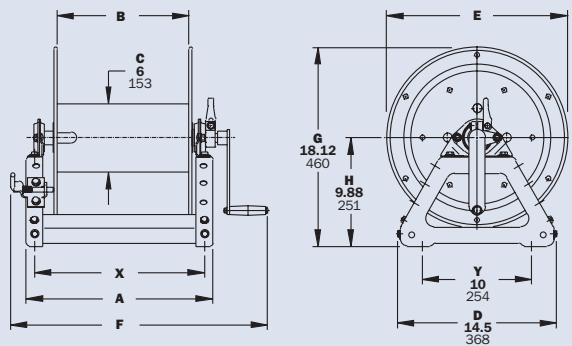
1. Specifications subject to change.
2. Upon request, reels can be supplied with drum lengths other than shown and with disc sizes in other diameters.
3. Dimensions reflect pressed frames.
4. Weights shown in chart are for crank rewind models. **ADD these amounts for power rewind models (does not apply to FedEx or UPS):**

	Net lbs/kg	Ship lbs/kg
Electric	18/8.2	18/8.2
Hydraulic	15/6.8	15/6.8
Air	15/6.8	15/6.8

5. When ordering power rewind models, prefix model number with:
A = Air Rewind
E = Electric Rewind
HD = Hydraulic Rewind
 (Air rewind reels are supplied with control valve and 18" air hose; 12v and 24v DC rewind reels are supplied with switch and solenoid; 115v AC rewind reels are not supplied with switch but can be ordered separately; hydraulic rewind reels are not supplied with control valve.)

6. **Finish:** Refer to page 3.
7. **Be sure to check dimensions and weights prior to ordering.**

*Dimensional weight applies when shipped as a parcel package (via FedEx or UPS Ground).
 *** X, Y indicate mounting holes. See page 5.



Crank rewind shown