

SCR10-17-19

SPRING REWIND REELS

To handle live electric cable.

- Heavy-duty spring motor.
- Non sparking ratchet assembly.
- Declutching arbor.
- 3-conductor 30 amp.
- 6 foot power source.
- 15 amp, 3 prong straight blade plug provided standard. (Twistlock plug is optional).
- Cable stop should be used.



Standard Configuration shown



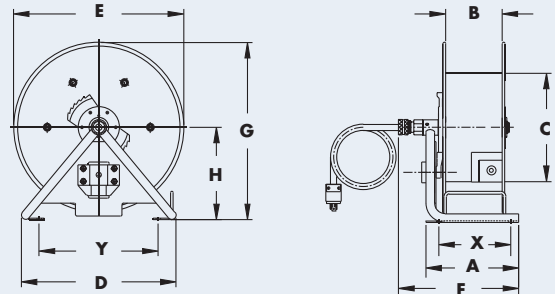
P/N 9939.0004
Optional Roller Mounting Bracket for the SCR 10-17-19 reel

Parts Drawing – ISO 46

Model Number	Cable Capacity of Reel <small>feet</small> m.			Approx. Weight <small>lb.</small> kg.		Reel Dimensions*** <small>inches</small> mm.										
	GA. / NO. OF CONDUCTORS			NET	SHIP	A	B	C	D	E	F	G	H	X	Y	
	16/3	14/3	12/3													
	O.D. (in)	.390	.530	.600												
	O.D. (mm)	10	14	15												
SCR10-17-19		70	70	75	42	52*	9.25	6.5	10.5	15	16.5	11.75	17.12	8.94	7	11.25
		21	21	23	19	24	235	165	267	381	419	298	435	227	178	286

Notes:

1. Specifications subject to change.
 2. Be sure to check dimensions and weights prior to ordering.
- *When shipped as a parcel package (via FedEx or UPS ground).
**x,y indicate mounting holes



Model SCR10-17-19